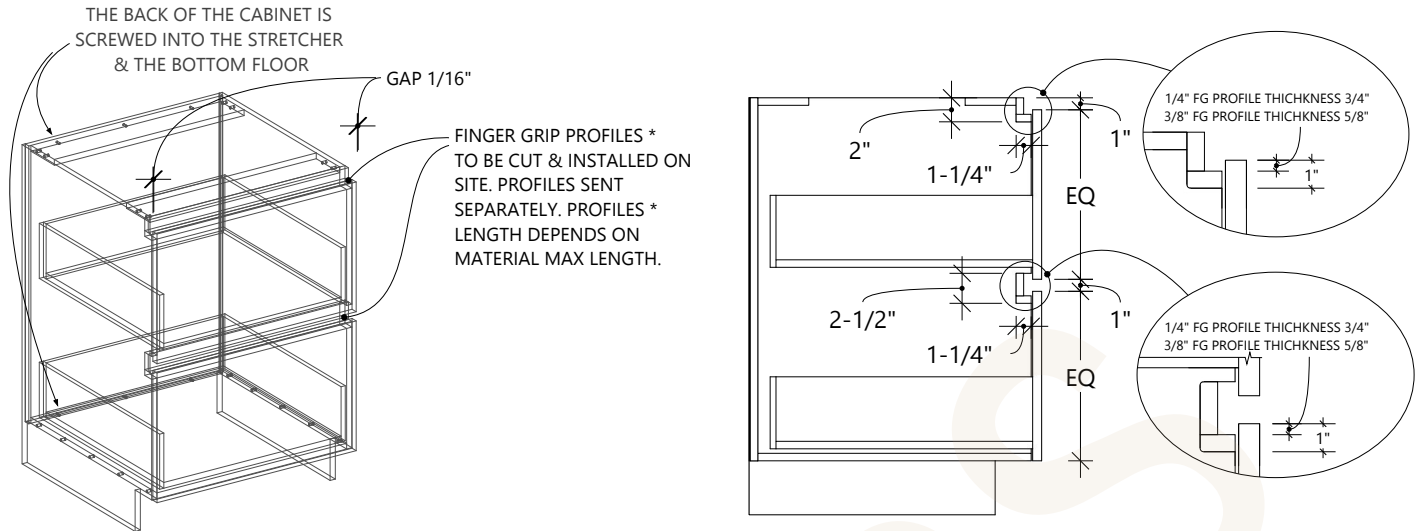


# BASE CABINET FINGER GRIP STANDARD



\* REFER TO [FG-2](#) & [FG-2.5](#) (SEE "WORKSHOP" SECTION) FOR FG PROFILES & "THE COLLECTION" FOR MATERIAL LENGTH. ALSO REFER TO [FINGER GRIP INFORMATION](#) (SEE "BASE CABINETS" SECTION)

## DRAWER FRONT ALIGNMENT

A TOOL TO HELP YOU WITH THE DESIGN ALIGNMENT IN YOUR PROJECT

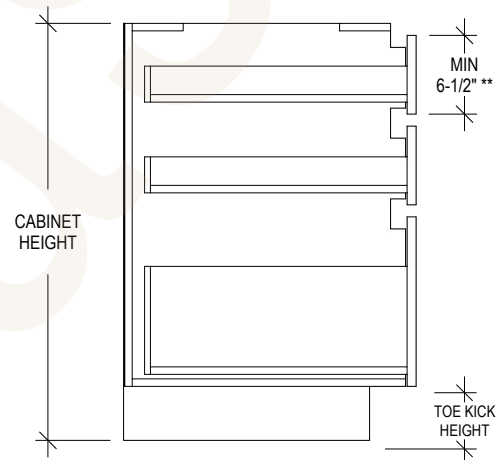
FORMULA:

CABINET HEIGHT - TOE KICK = CHTK

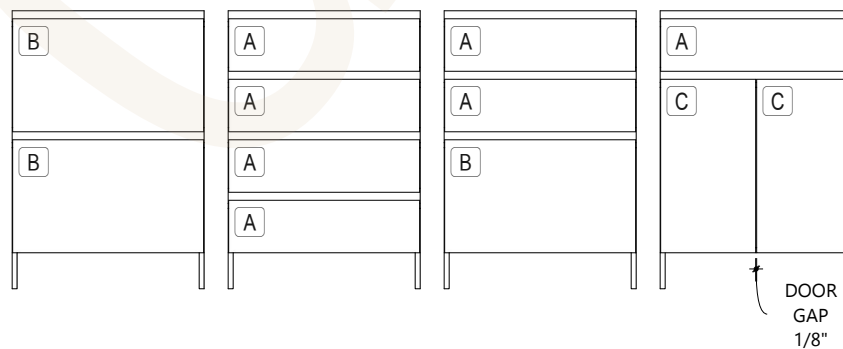
$$(CHTK - 4") \div 4 = \boxed{A}^{**}$$

$$(CHTK - 2") \div 2 = \boxed{B}^{**}$$

$$CHTK - 2" - A = \boxed{C}^{**}$$



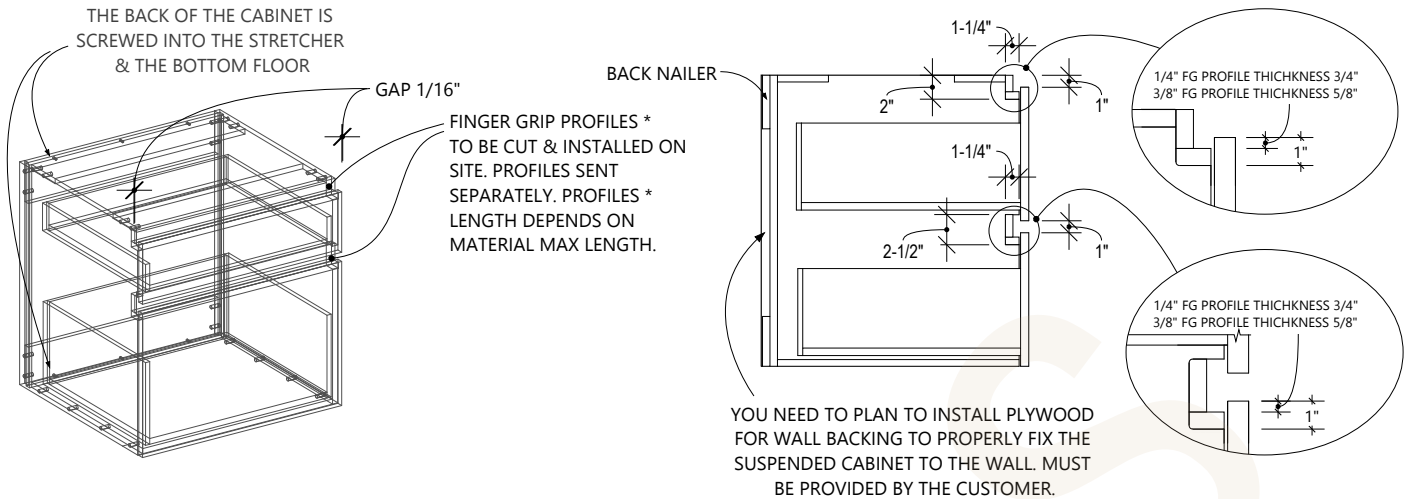
## ALIGNMENT DIAGRAM



\*\* REFER TO [DOOR LIMITATION](#) HEIGHT (SEE THE "COLLECTION") / REFER TO [DRAWER TAB](#) (SEE IN "ANNEXES" SECTION)

⚠ THE SMALLEST INCREMENT ACCEPTED FOR DOORS & DRAWER FRONTS DIMENSIONS IS 1/16". DIMENSIONS CANNOT BE ROUNDED. PLAN CAREFULLY YOUR ALIGNMENT.

# BASE CAB. FINGER GRIP SUSPENDED STANDARD



\* REFER TO [FG-2](#) & [FG-2.5](#) (SEE "WORKSHOP" SECTION) FOR FG PROFILES & "THE COLLECTION" FOR MATERIAL LENGTH. ALSO REFER TO [FINGER GRIP INFORMATION](#) (SEE "BASE CABINETS" SECTION)

## DRAWER FRONT ALIGNMENT

A TOOL TO HELP YOU WITH THE DESIGN ALIGNMENT IN YOUR PROJECT

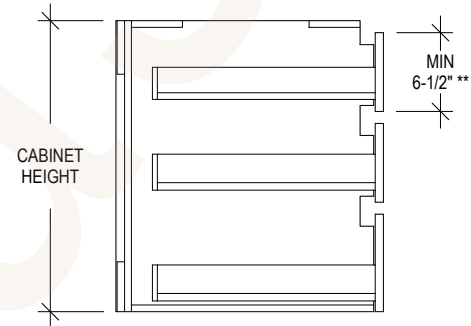
FORMULA:

CABINET HEIGHT = CH

SELECT THE DIMENSION HEIGHT YOU NEED = **A** \*\*

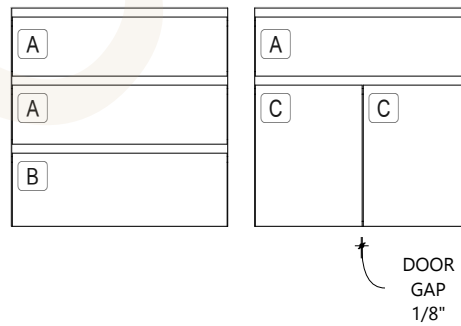
$CH - 3" - (A \times 2) =$  **B** \*\*

$CH - 2" - A =$  **C** \*\*



## ALIGNMENT DIAGRAM

BE CAREFUL: THE ALIGNMENT OF THE STD DRAWER FRONTS HEIGHT IS NOT EQUAL



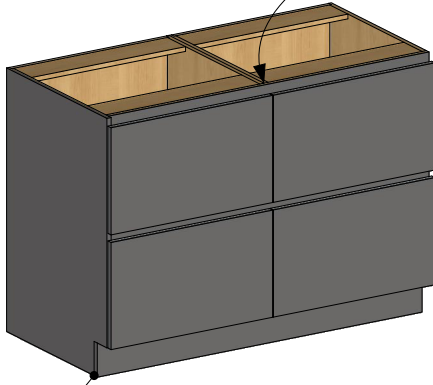
\*\* REFER TO [DOOR LIMITATION](#) HEIGHT (SEE THE "COLLECTION") / REFER TO [DRAWER TAB](#) (SEE IN "ANNEXES" SECTION)

⚠ THE SMALLEST INCREMENT ACCEPTED FOR DOORS & DRAWER FRONTS DIMENSIONS IS 1/16". DIMENSIONS CANNOT BE ROUNDED. PLAN CAREFULLY YOUR ALIGNMENT.

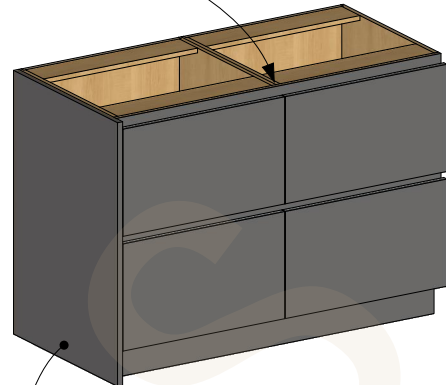
# BASE CABINET FINGER GRIP INFORMATION

FINGER GRIP PROFILES TO BE CUT AND INSTALLED ON SITE.  
PROFILES ARE SENT SEPARATELY FROM CABINETS.  
PROFILE LENGTH DEPENDS ON MATERIAL MAX LENGTH.

THE FINGER GRIP PROFILE IS USED TO HIDE  
CABINETS EDGES AND SEAMS.  
(FINGER GRIP PROFILE AVAILABLE  
IN THE "WORKSHOP" SECTION.)



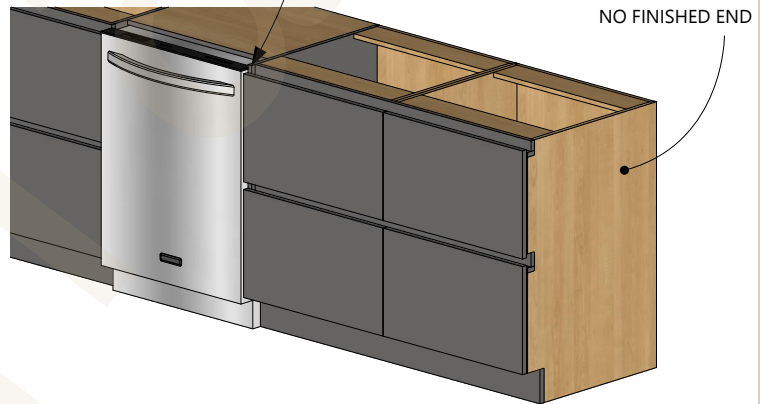
THERE IS NO FINGER GRIP NOTCH ON FINISHED  
END CABINET SIDE.



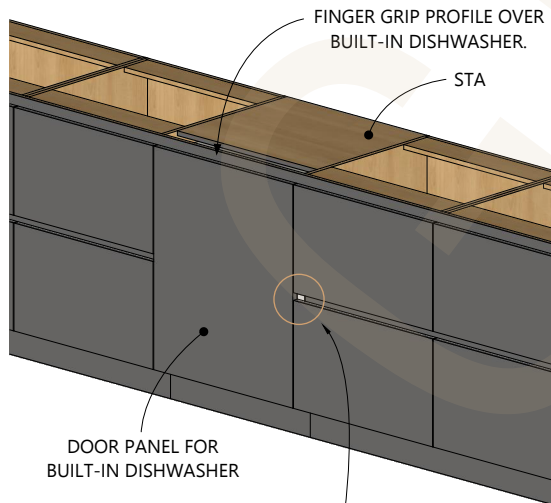
A PANEL CAN ALSO BE USED TO CREATE A  
FINISHED END.

## FG WITH DISHWASHER RECOMMENDED INSTALLATION:

ALWAYS ADD A FINISHED END BESIDE AN APPLIANCES. THIS WILL  
PREVENT TO SEE THE APPLIANCES THROUGH FINGER GRIP NOTCH.



## FG WITH DISHWASHER INSTALLATION "NOT" RECOMMENDED:



DOOR PANEL FOR  
BUILT-IN DISHWASHER

FINGER GRIP PROFILE OVER  
BUILT-IN DISHWASHER.

STA

IF YOU USE A FINGER GRIP DRAWERS CABINET AGAINST A  
DISHWASHER, THE SIDE OF THE DISHWASHER WILL BE SHOWN.

TO AVOID THIS SITUATION, REFER TO [BASE CABINET FG WITH PUSH  
TO OPEN INFORMATION](#) (SEE "ACCESSORIES" SECTION).

TO DETERMINE THE DISHWASHER  
OPENING HEIGHT AVAILABLE:  
CABINET HEIGHT MINUS 2" (FG PROFILE)

