

CONSTRUCTION	
FRAME:	FRAMELESS
STYLE:	LACQUER COLLECTION
DOOR / DRAWER STYLE:	URBAN (SLAB)
DOOR / PANEL MATERIAL:	ONE PIECE HDF WITH CATALYTICALLY CURED TOPCOAT
CABINET BOX:	¾" LAMINATE ON DENSE FIBERBOARD
DRAWER BOX:	AVANTEC WHITE METAL SIDES 5/8" WHITE MELAMINE FLOOR / BACK
	ROLL-OUTS WITH AVANTEC WHITE METAL FRONT PANEL
SLIDES:	QUADRO BY HETTICH / SOFT CLOSE
HINGES:	BLUM 110 BLUMOTION / SOFT CLOSE CONCEALED
HARDWARE:	TIP-ON (TOUCH LATCH), FINGER GRIP, OR EDGE PULL AS NOTED PER PLANS

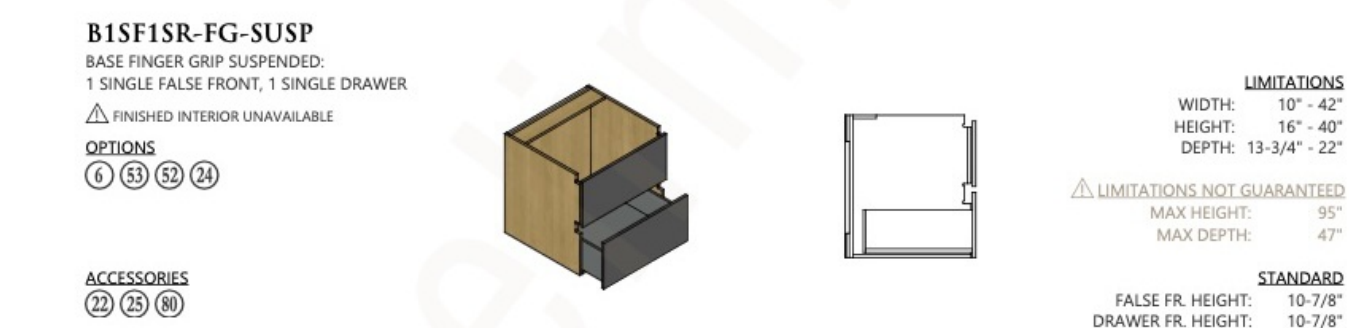
FINISH	MDF LACQUER COLLECTION OPTION
EXTERIOR FINISH:	LACQUERED / CUSTOM COLOR MATCH TO RAL 9010
INTERIOR FINISH:	WHITE / CRYSTALITE FINISH L175C
DRAWER / ROLLOUT:	WHITE

CONSTRUCTION	
FRAME:	FRAMELESS
STYLE:	VELVET COLLECTION
DOOR / DRAWER STYLE:	URBAN (SLAB)
DOOR / PANEL MATERIAL:	DENSE FIBERBOARD CORE WITH POLYMER LAMINATE FACE / FINGERPRINT RESISTANT / ANTIBACTERIAL
CABINET BOX:	3/4" THICK / LAMINATE ON DENSE FIBERBOARD
DRAWER BOX:	AVANTEC WHITE METAL SIDES 5/8" WHITE MELAMINE FLOOR / BACK
	ROLL-OUTS WITH AVANTEC WHITE METAL FRONT PANEL
SLIDES:	QUADRO BY HETTICH / SOFT CLOSE
HINGES:	BLUM 110 BLUMOTION / SOFT CLOSE CONCEALED
HARDWARE:	TIP-ON (TOUCH LATCH), FINGER GRIP, OR EDGE PULL AS NOTED PER PLANS

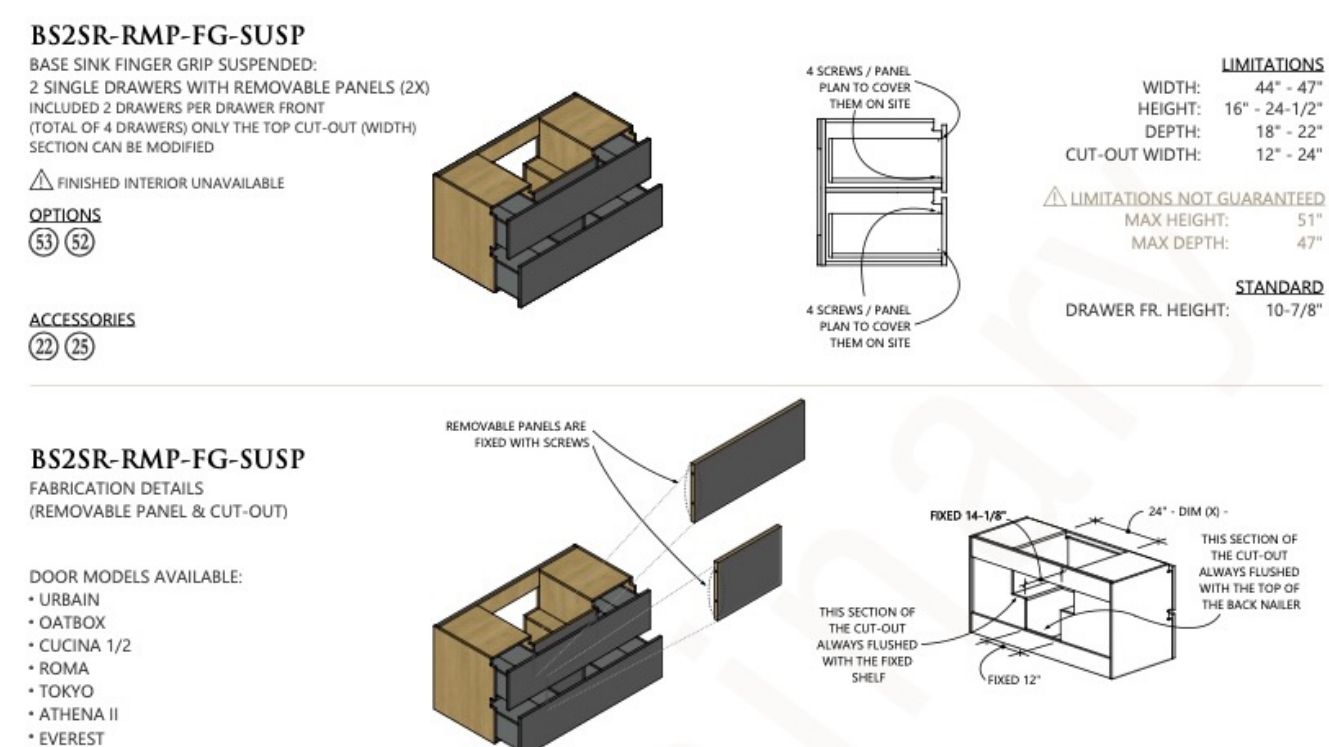
FINISH	VELVET COLLECTION OPTION
EXTERIOR FINISH:	COTTON MIST 02N
INTERIOR FINISH:	WHITE / CRYSTALITE FINISH L175C
DRAWER / ROLLOUT:	WHITE

SUSPENDED VANITY CABINET / FINGER GRIP / FALSE  
FRONT UPPER / DRAWER BELOW WITH PLUMBING CUTOUT

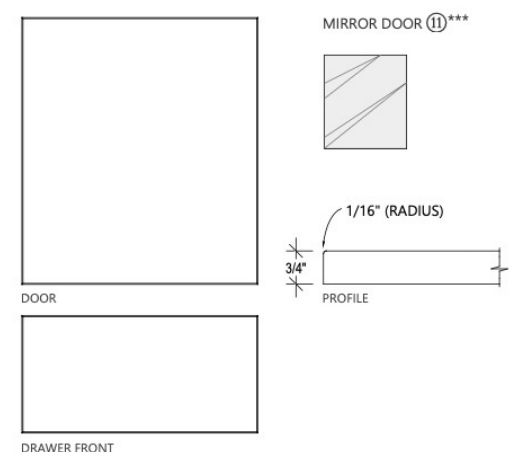
NOTE: OUR PROPOSAL ASSUMES  
CUSTOMIZING DRAWER FRONT SIZES AND  
FINGER GRIP CUTOUT PLACEMENT TO ALIGN  
WITH ARCHITECTURAL CONCEPT DRAWINGS



SUSPENDED COMBO CABINET / FINGER GRIP / FALSE FRONT UPPER / DRAWER BELOW  
FULL WIDTH FRONT OPEN DUAL DRAWERS / CENTER SINK SPACE WITH REMOVABLE PANELS



GRAIN DIRECTION (DOOR & DRAWER FRONT): SOLID



**LIMITATIONS & DETAILS**

**DOOR**

WIDTH: 4-3/4" - 24"

HEIGHT: 4-3/4" - 72"

MAX NOT GUARANTEED WIDTH: 108"

MAX NOT GUARANTEED HEIGHT: 47"

MAX MIRROR DOOR W X H: 24" X 52"  
(OR 9FT)

**DRAWER FRONT**

WIDTH: 4-3/4" - 42"

HEIGHT: 4-3/4" - 42"

MAX NOT GUARANTEED WIDTH: 108"

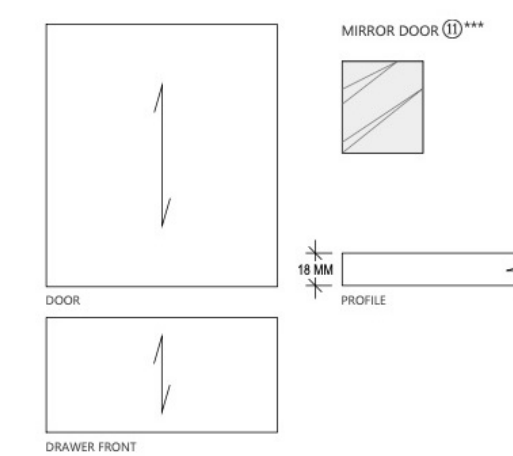
**DOOR WEIGHT PER FT<sup>2</sup>**

ADD HANDLE WEIGHT TO MAX WEIGHT

WEIGHT LIMITATIONS SEE "PRODUCT GUIDE"

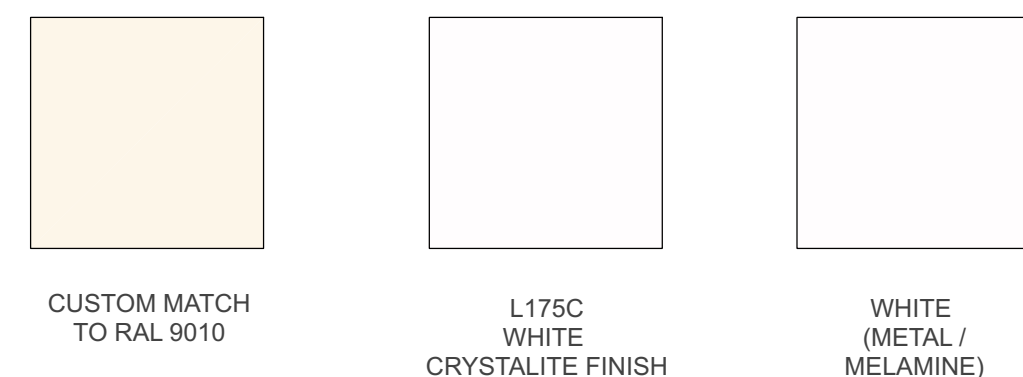
**COMING SOON**

GRAIN DIRECTION (DOOR & DRAWER FRONT): SOLID OR VERTICAL



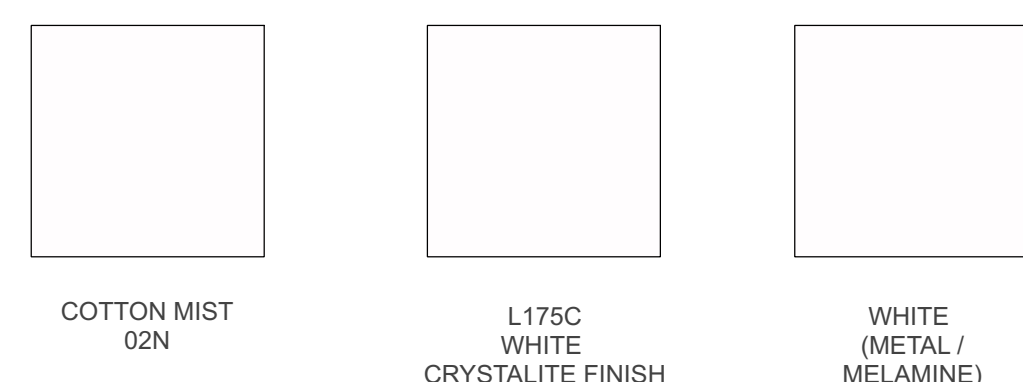
LIMITATIONS & DETAILS	
	DOOR
WIDTH:	5" - 24"
HEIGHT:	5" - 72"
MAX NOT GUARANTEED WIDTH:	46-3/8"
MAX NOT GUARANTEED HEIGHT:	108"
MAX MIRROR DOOR W X H:	24" X 52" (OR 9FT)
	DRAWER FRONT
WIDTH:	5" - 42"
HEIGHT:	5" - 42"
MAX NOT GUARANTEED WIDTH:	46-3/8"
	DOOR WEIGHT PER FT
ADD HANDLE WEIGHT TO THE MECHANISM	
WEIGHT LIMITATIONS SEE "PRODUCT GUIDE"	
	COMING SOON

EXTERIOR: INTERIOR: DRAWER:



NOTE: IMAGES MAY NOT ACCURATELY REFLECT TRUE COLOR/ REFER TO SAMPLE

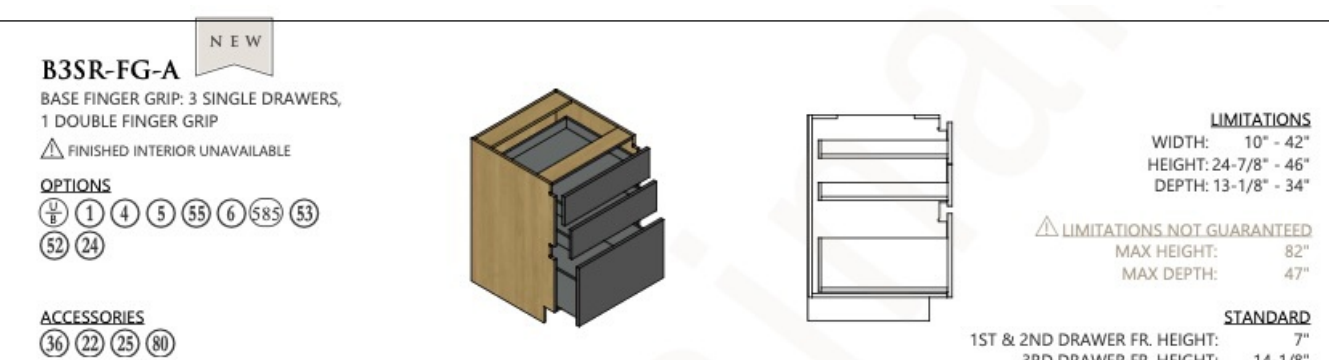
EXTERIOR: INTERIOR: DRAWER:



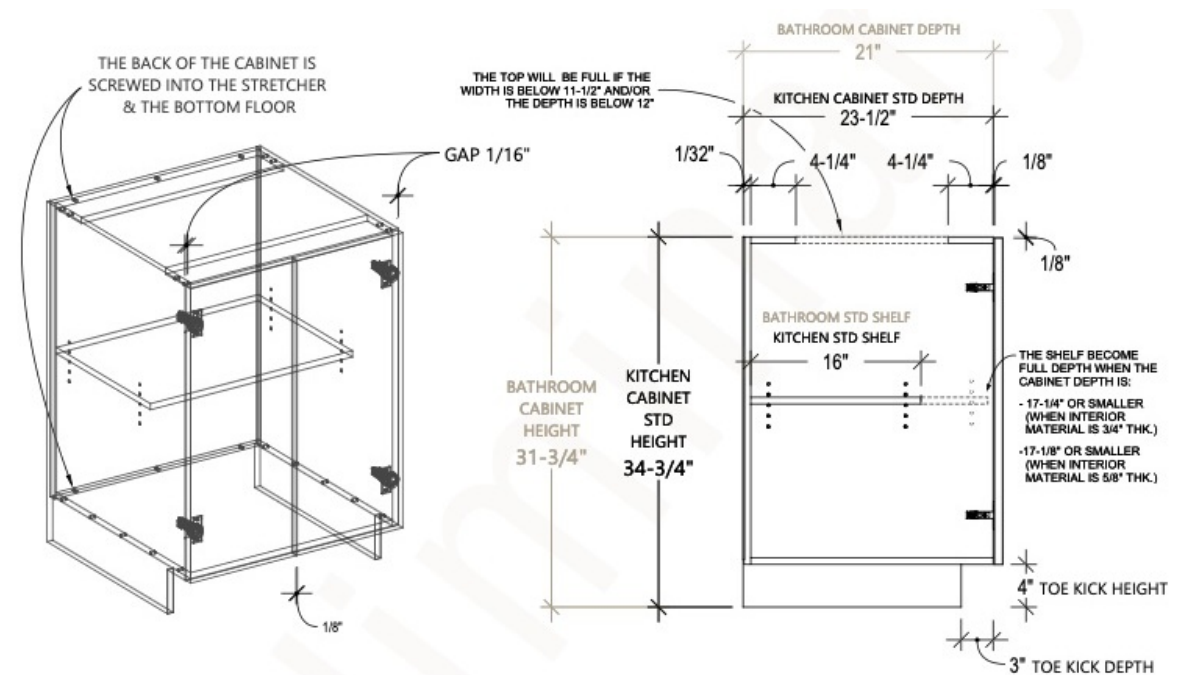
NOTE: IMAGES MAY NOT ACCURATELY REFLECT TRUE COLOR/ REFER TO SAMPLE

### FINGER GRIP BASES - STANDARD SPECIFICATION

NOTE: OUR PROPOSAL ASSUMES  
CUSTOMIZING DRAWER FRONT SIZES AND  
FINGER GRIP CUTOUT PLACEMENT TO ALIGN  
WITH ARCHITECTURAL CONCEPT DRAWINGS



### STANDARD BASES - STANDARD SPECIFICATION



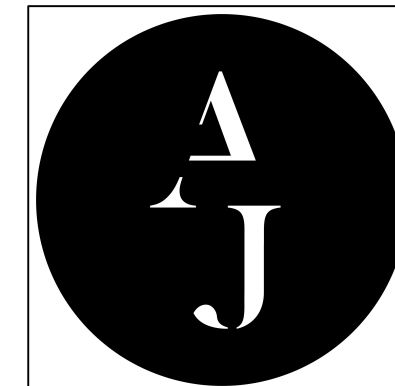
AVANTECH H77  
77MM BOX HEIGHT  
(3" NOMINAL)



AVANTECH H101  
101MM BOX HEIGHT  
(4" NOMINAL)



**AVANTECH H187**  
187MM BOX HEIGHT  
(7-3/8" NOMINAL)



Ateliers Jacob DC

3330 Cady's Alley NW  
Washington, D.C. 20007  
202.525.2527

e: amy@ateliersjacobdc.com  
w: www.ateliersjacobdc.com

[illegible]

PROJECT:  
EASTBANC  
2715 PENNSYLVANIA  
AVE NW

SHEET :

# Cover

DATE: 6.18.25

SCALE: PER SHEET

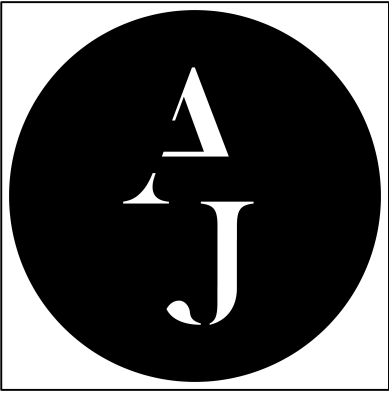
NOTE: PLANS ARE NOT FOR CONSTRUCTION. DESIGNS AS SHOWN ARE PREPARED FOR THE PURPOSE OF PREPARING AN ACCURATE SCOPE FOR BID PRICING AND ARE BASED ON PLANS PROVIDED BY EASTBANC DATED 4.7.25. THEY ARE PRELIMINARY AND ARE TO BE DESIGNED IN COLLABORATION WITH DEVELOPER AND/OR DEVELOPER'S AGENTS.

# Millwork Schematic Plans: 2715 Pennsylvania Avenue NW





NOTE: PLANS ARE NOT FOR CONSTRUCTION. DESIGNS AS SHOWN ARE PREPARED FOR THE PURPOSE OF PREPARING AN ACCURATE SCOPE FOR BID PRICING AND ARE BASED ON PLANS PROVIDED BY EASTBANC DATED 4.7.25. THEY ARE PRELIMINARY AND ARE TO BE DESIGNED IN COLLABORATION WITH DEVELOPER AND/OR DEVELOPER'S AGENTS.



Ateliers Jacob DC  
3330 Cady's Alley NW  
Washington, D.C. 20007  
202.525.2527  
  
e: amy@ateliersjacobdc.com  
w: www.ateliersjacobdc.com

[illegible]

PROJECT:  
EASTBANC  
2715 PENNSYLVANIA  
AVE NW

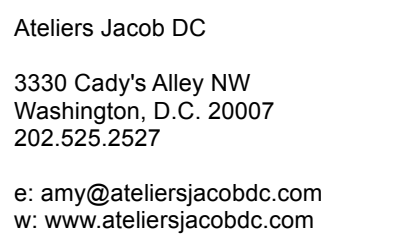
SHEET :  
K-001

DATE: 6.18.25

SCALE: PER SHEET



NOTE: PLANS ARE NOT FOR CONSTRUCTION. DESIGNS AS SHOWN ARE PREPARED FOR THE PURPOSE OF PREPARING AN ACCURATE SCOPE FOR BID PRICING AND ARE BASED ON PLANS PROVIDED BY EASTBANC DATED 4.7.25. THEY ARE PRELIMINARY AND ARE TO BE DESIGNED IN COLLABORATION WITH DEVELOPER AND/OR DEVELOPER'S AGENTS.



PROJECT:  
EASTBANC  
2715 PENNSYLVANIA  
AVE NW

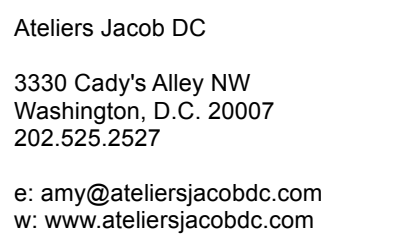
SHEET :  
K-002

DATE: 6.18.25

SCALE: PER SHEET



NOTE: PLANS ARE NOT FOR CONSTRUCTION. DESIGNS AS SHOWN ARE PREPARED FOR THE PURPOSE OF PREPARING AN ACCURATE SCOPE FOR BID PRICING AND ARE BASED ON PLANS PROVIDED BY EASTBANC DATED 4.7.25. THEY ARE PRELIMINARY AND ARE TO BE DESIGNED IN COLLABORATION WITH DEVELOPER AND/OR DEVELOPER'S AGENTS.



PROJECT:  
EASTBANC  
2715 PENNSYLVANIA  
AVE NW

SHEET :  
K-003

DATE: 6.18.25

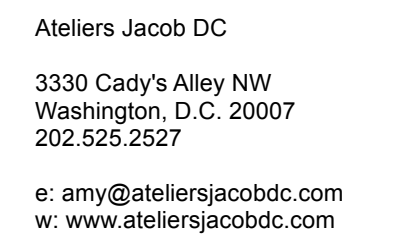
---

SCALE: PER SHEET





NOTE: PLANS ARE NOT FOR CONSTRUCTION. DESIGNS AS SHOWN ARE PREPARED FOR THE PURPOSE OF PREPARING AN ACCURATE SCOPE FOR BID PRICING AND ARE BASED ON PLANS PROVIDED BY EASTBANC DATED 4.7.25. THEY ARE PRELIMINARY AND ARE TO BE DESIGNED IN COLLABORATION WITH DEVELOPER AND/OR DEVELOPER'S AGENTS.

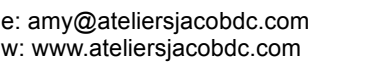
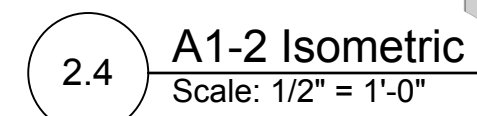
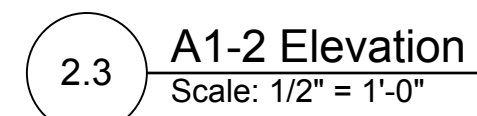
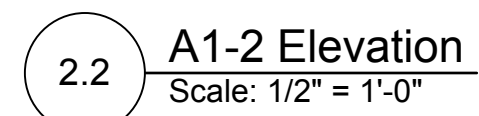
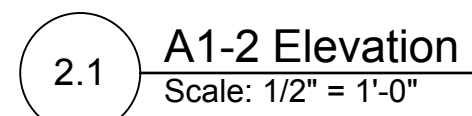
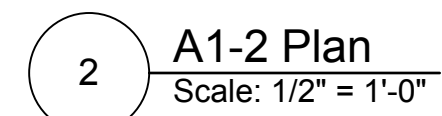
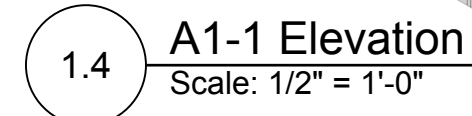
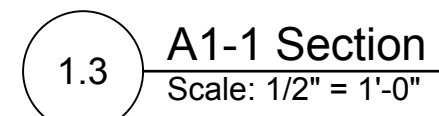
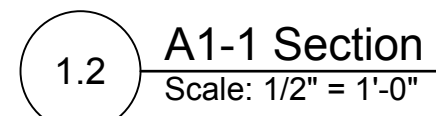
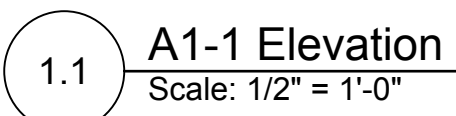
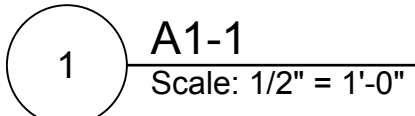
[illegible]

PROJECT:  
EASTBANC  
2715 PENNSYLVANIA  
AVE NW

SHEET :  
K-004

DATE: 6.18.25

SCALE: PER SHEET



PROJECT:  
EASTBANC  
2715 PENNSYLVANIA  
AVE NW

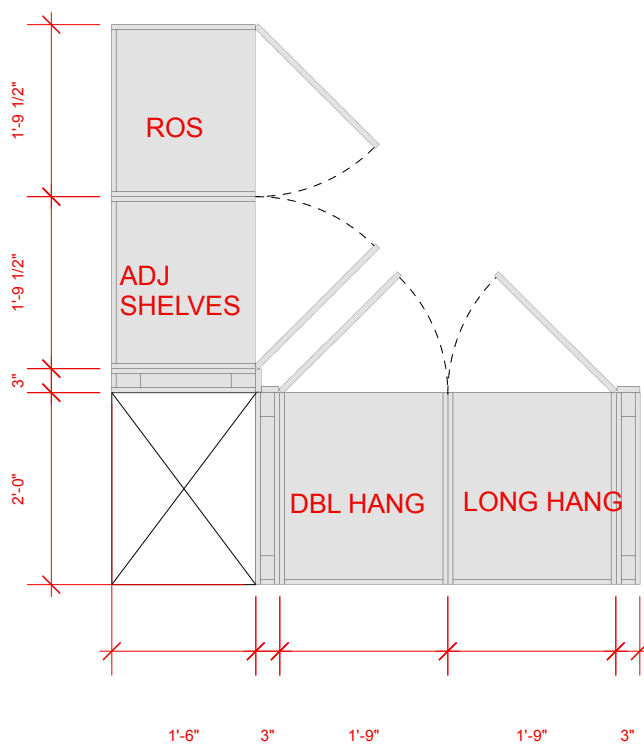
C-001

SCALE: PER SHEET

NOTE: PLANS ARE NOT FOR CONSTRUCTION. DESIGNS AS SHOWN ARE PREPARED FOR THE PURPOSE OF PREPARING AN ACCURATE SCOPE FOR BID PRICING AND ARE BASED ON PLANS PROVIDED BY EASTBANC DATED 4.7.25. THEY ARE PRELIMINARY AND ARE TO BE DESIGNED IN COLLABORATION WITH DEVELOPER AND/OR DEVELOPER'S AGENTS.



NOTE: B2 REPLACED WITH B1. THIS IS TO MAXIMIZE ROOM.



Technical drawing of a diamond-shaped window. The drawing includes a top section labeled "OPEN" and a diamond-shaped window below it. Dimensions are provided in feet and inches:

- Top section height: 1'-4"
- Window height: 7'-0"
- Window width (left side): 1'-9 1/2"
- Window width (right side): 1'-9"
- Window width (bottom): 3'1" and 3'1"


Diagram of the DBL HANG and ADJ SHELVES unit. The unit is divided into two sections: DBL HANG (top) and ADJ SHELVES (bottom). The overall width is 2'-0 1/8" and the overall height is 3'-8".

Diagram illustrating the dimensions and components of a three-bay shelving unit:

- Overall Width:** 11' 1/2" - 1' 5"
- Bay Widths:** 2' - 10"
- Overall Height:** 1' 9"
- Components:** LONG HANG, DBL HANG, and ADJ SHELVES.

Diagram of a DBL HANG door. The door is labeled "DBL HANG". The height is indicated as 4'-1" and the width is indicated as 1'-4".

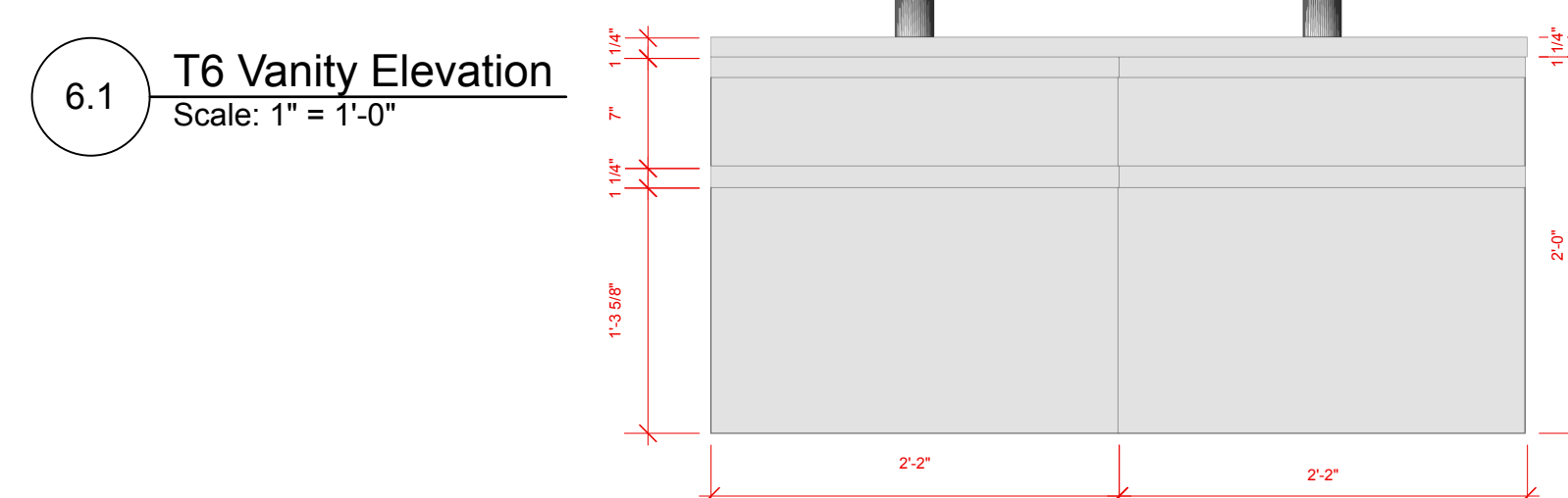
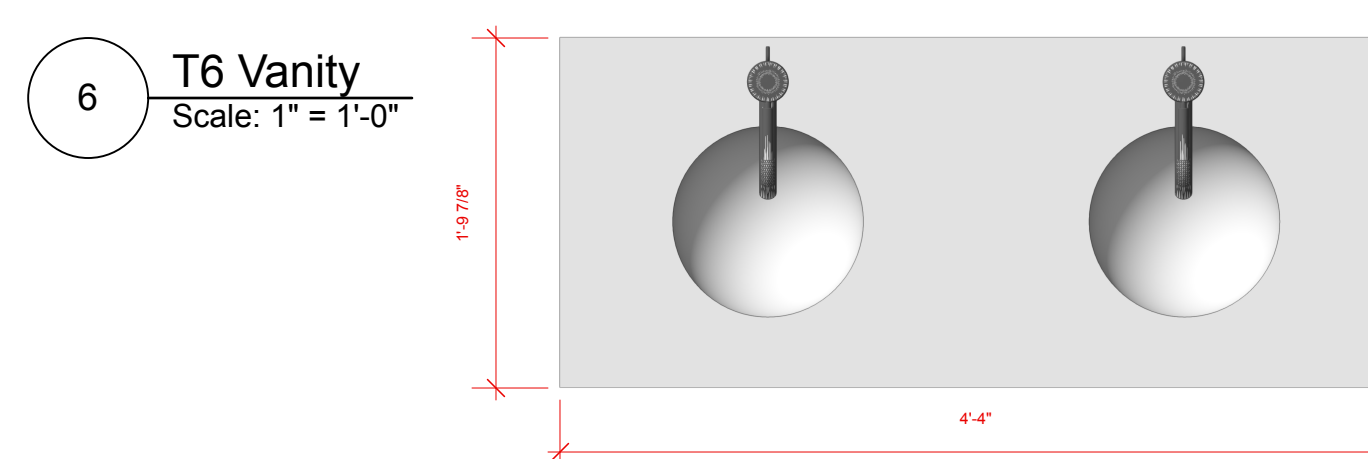
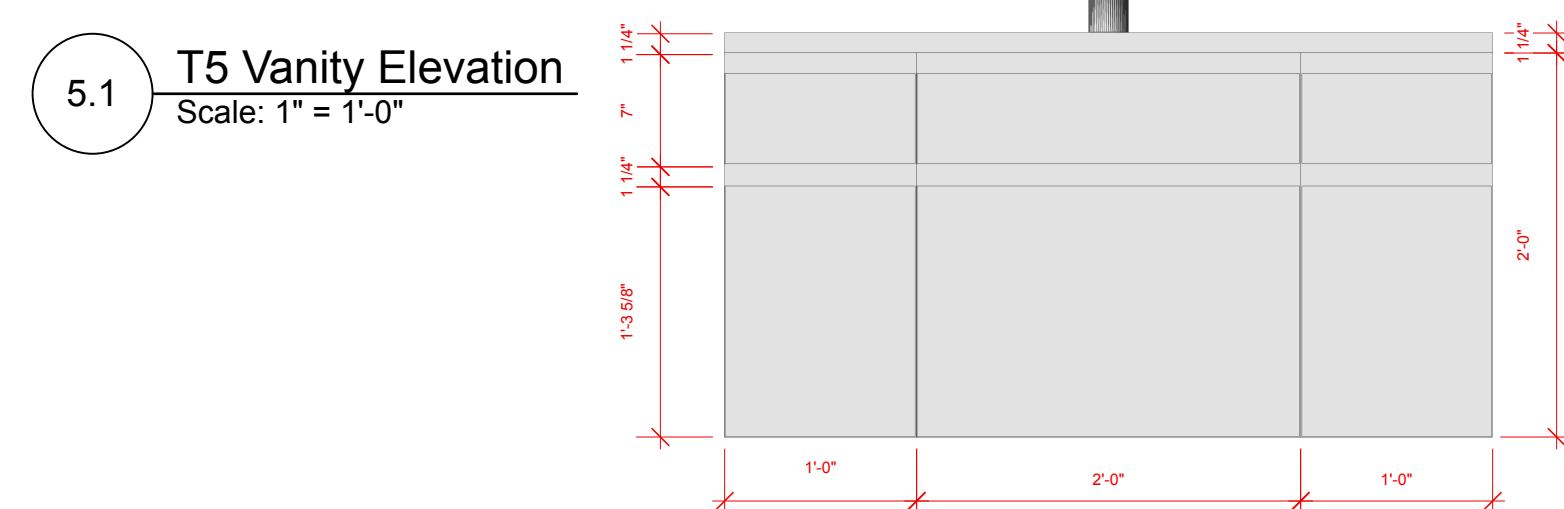
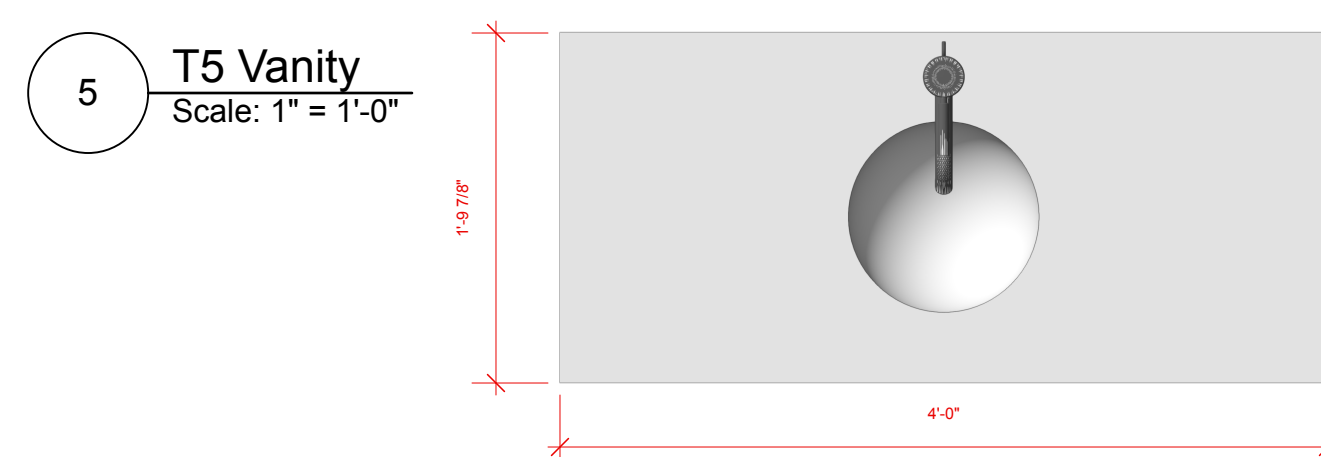
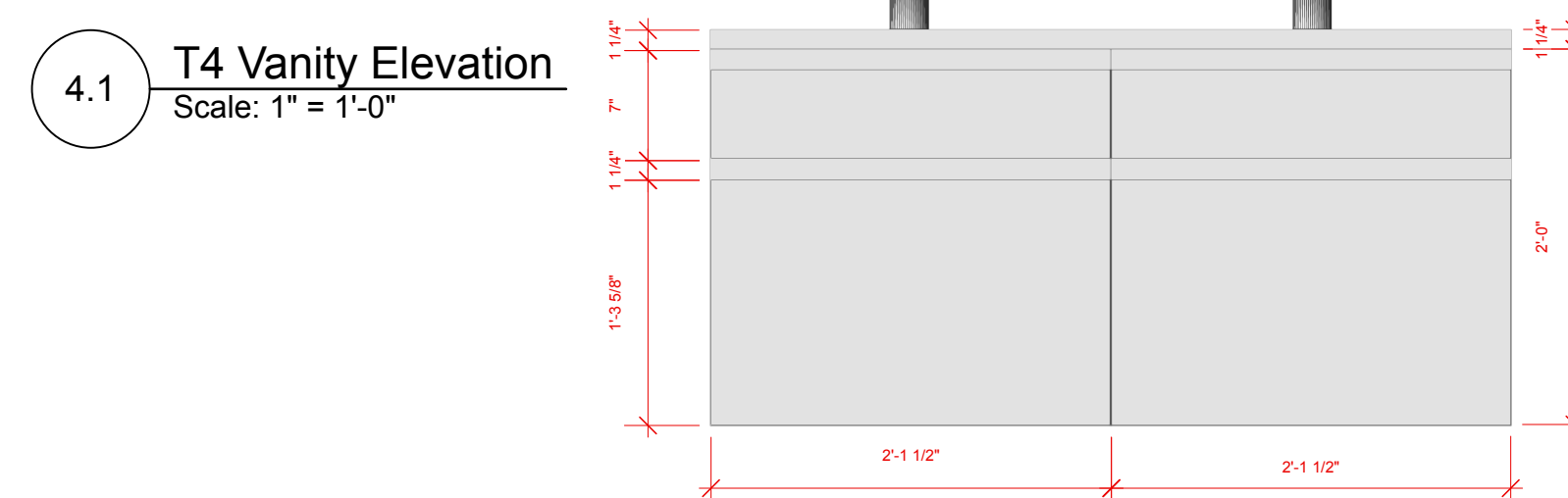
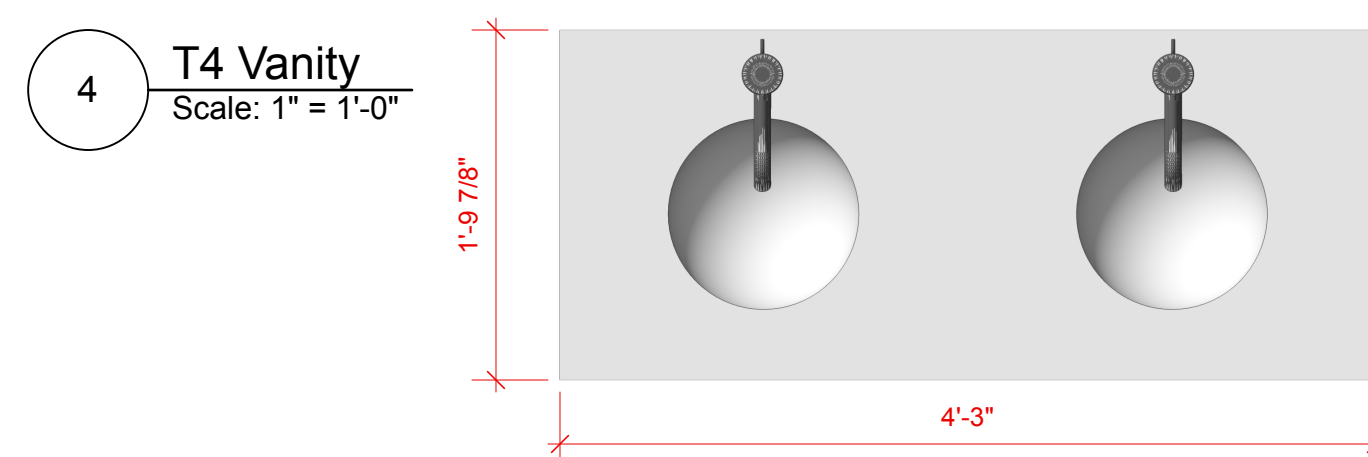
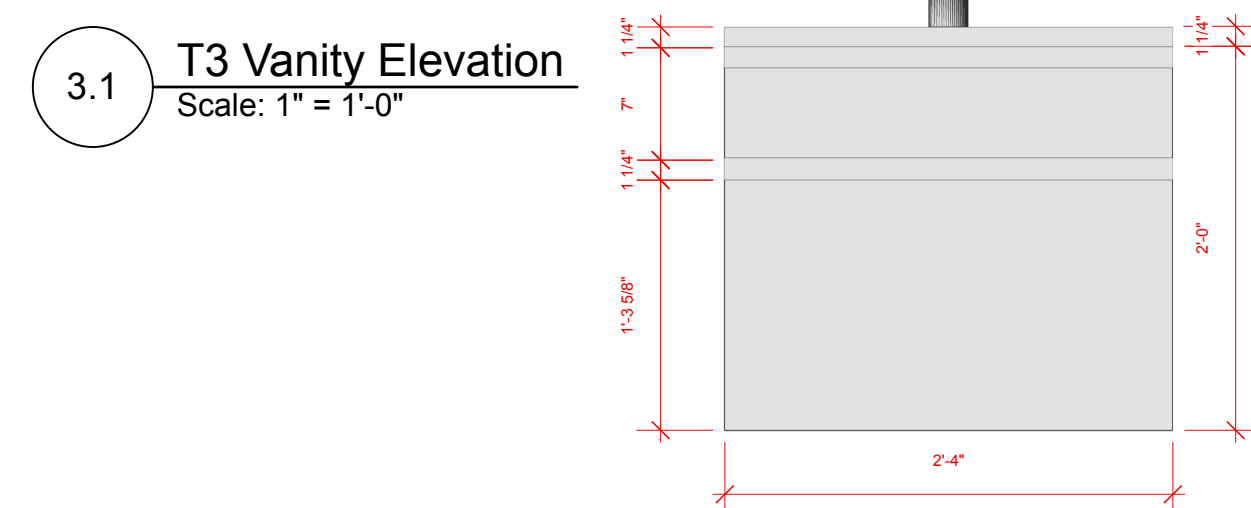
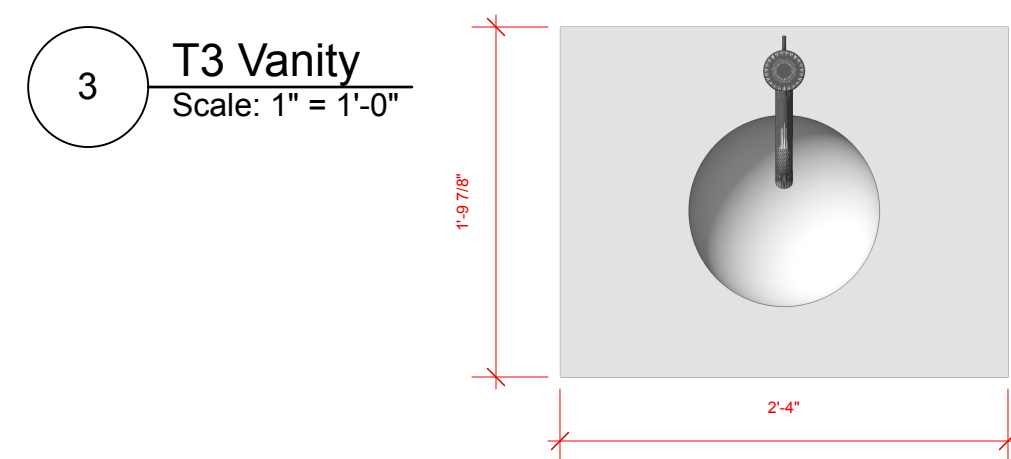
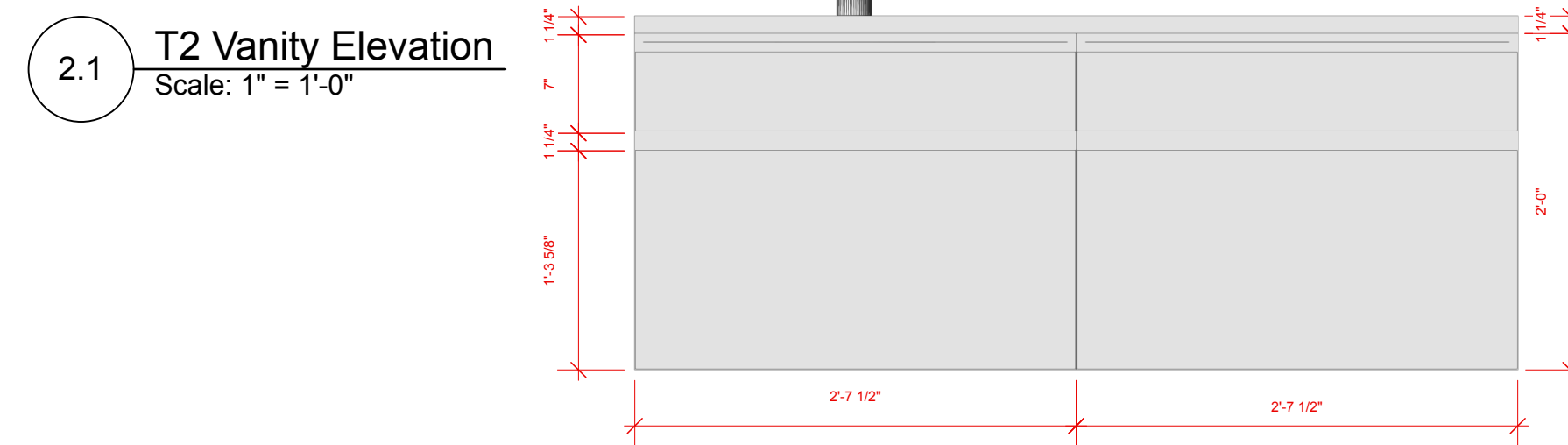
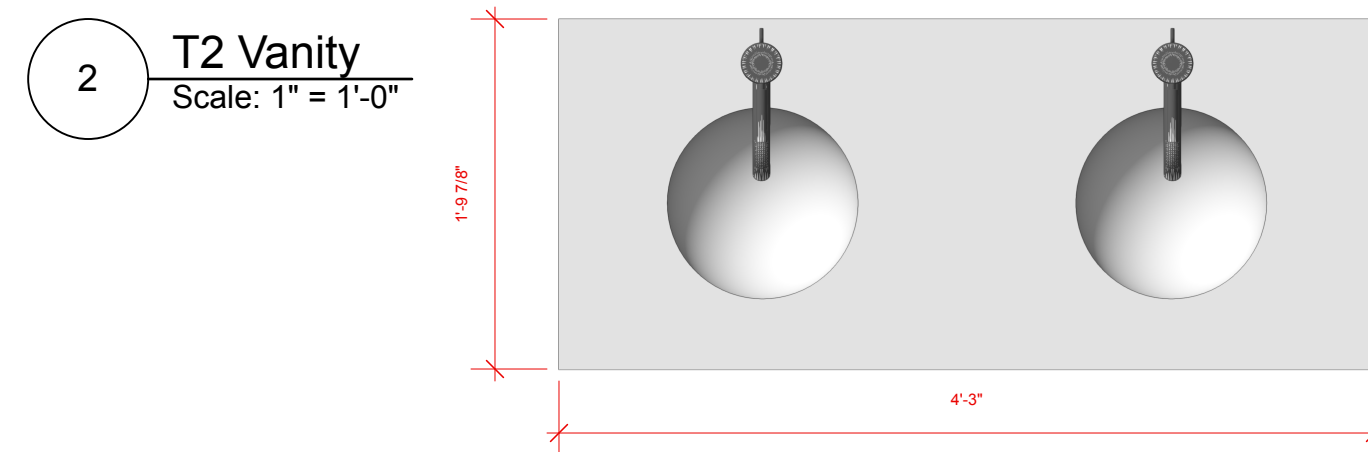
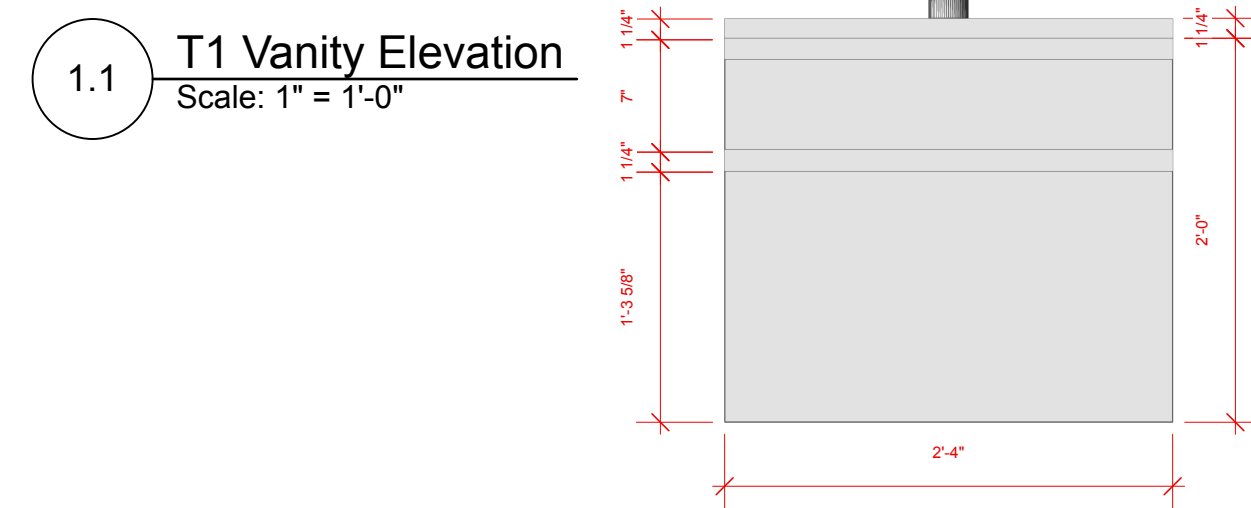
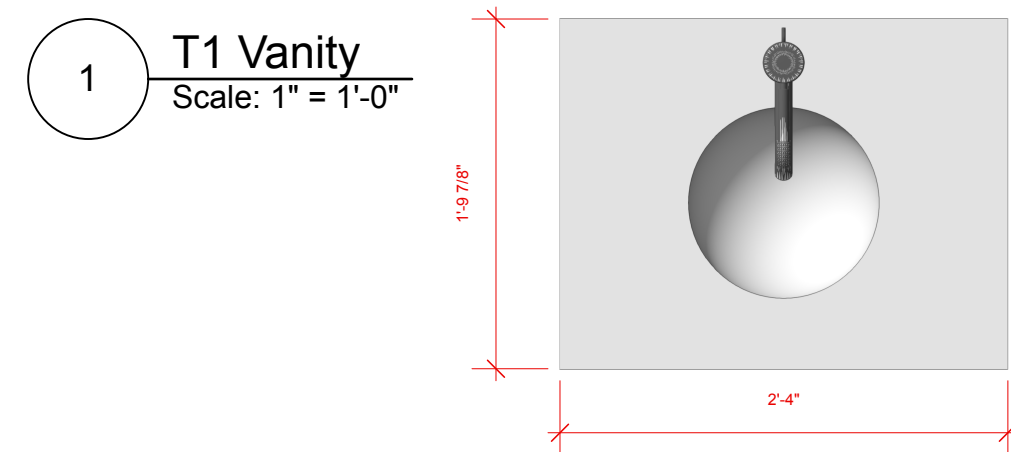
Diagram of a two-level shelving unit. The top level is labeled "ADJ. SHELVES" and has a width of 1'-4". The bottom level is labeled "DBL. HANG" and has a width of 4'-11". The total height of the unit is 1'-9", and the height of the top level is 2'-1".

[illegible]

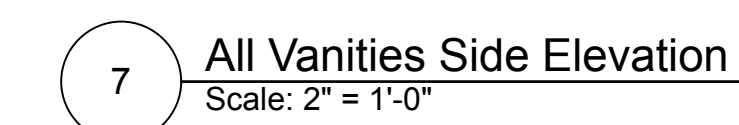
SHEET :  
C-002

SCALE: PER SHEET

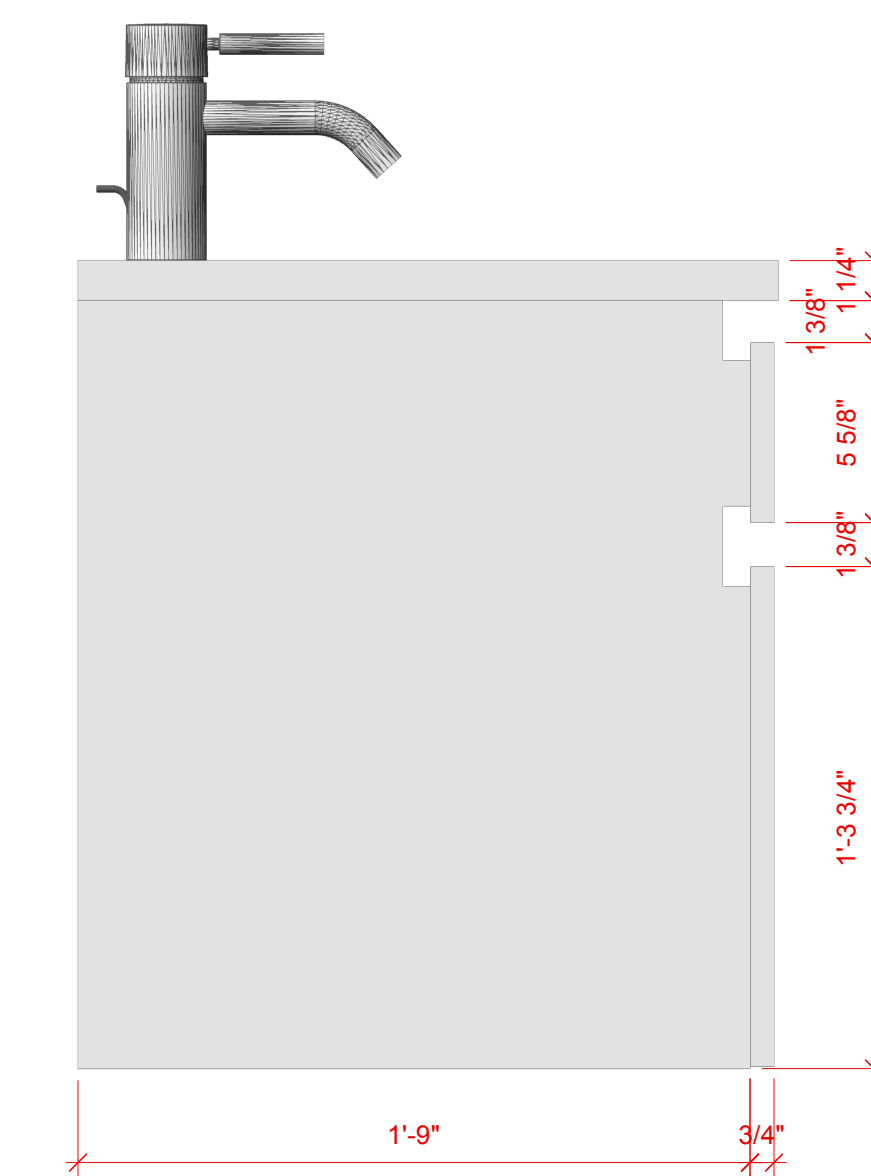
NOTE: PLANS ARE NOT FOR CONSTRUCTION. DESIGNS AS SHOWN ARE PREPARED FOR THE PURPOSE OF PREPARING AN ACCURATE SCOPE FOR BID PRICING AND ARE BASED ON PLANS PROVIDED BY EASTBANC DATED 4.7.25. THEY ARE PRELIMINARY AND ARE TO BE DESIGNED IN COLLABORATION WITH DEVELOPER AND/OR DEVELOPER'S AGENTS.



NOTE: VANITIES ARE SHOWN AT 24" HIGH VS. PLAN DIMENSIONS OF 18" HIGH. THIS IS TO MAXIMIZE FUNCTIONALITY.



NOTE: ACTUAL DOORS WILL HAVE AN 1/8" GAP

[illegible]

PROJECT:  
EASTBANC  
2715 PENNSYLVANIA  
AVE NW

SHEET :  
V-001

DATE: 6.18.25

SCALE: PER SHEET

NOTE: PLANS ARE NOT FOR CONSTRUCTION. DESIGNS AS SHOWN ARE PREPARED FOR THE PURPOSE OF PREPARING AN ACCURATE SCOPE FOR BID PRICING AND ARE BASED ON PLANS PROVIDED BY EASTBANC DATED 4.7.25. THEY ARE PRELIMINARY AND ARE TO BE DESIGNED IN COLLABORATION WITH DEVELOPER AND/OR DEVELOPER'S AGENTS.