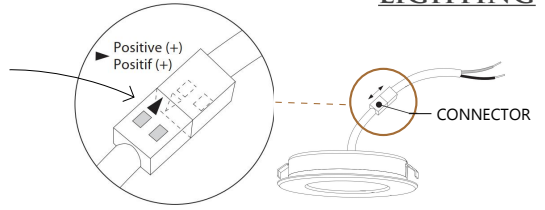
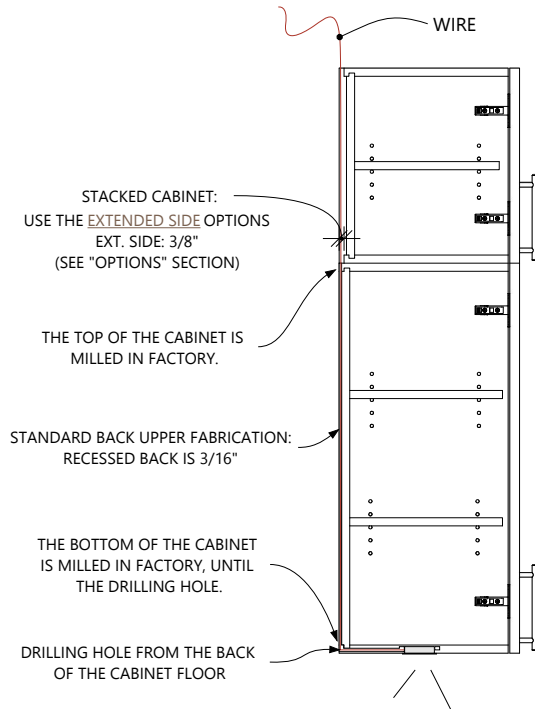


37 PUCK LIGHT INFORMATION

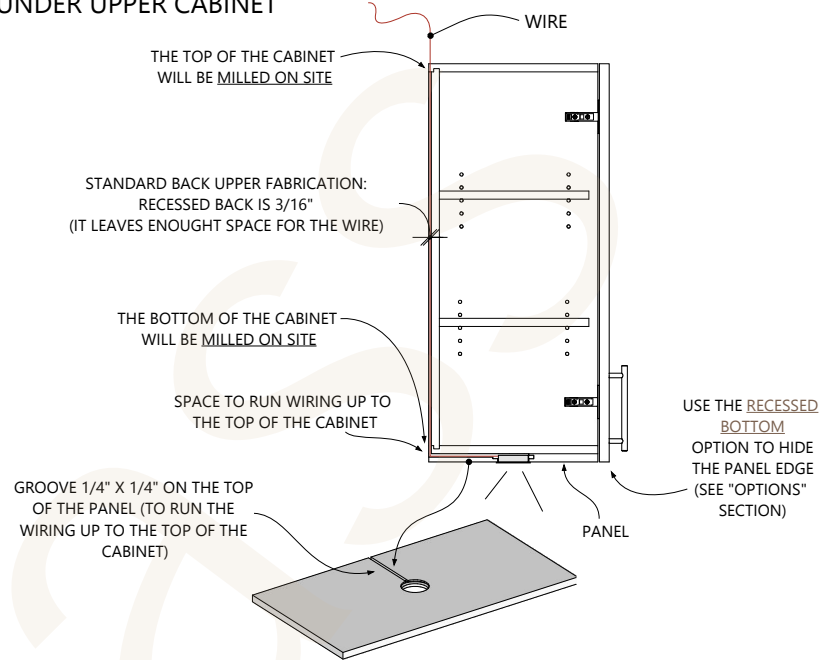
FOR THE CONNECTION OF THE PUCK LIGHT (3 INCH WIRE) WITH THE EXTENSION CORD (80 INCH), THE TRIANGLE SYMBOLS SHOULD NOT BE CONNECTED ON THE SAME FACE. OR ELSE, THE PUCK LIGHT WILL NOT LIGHT UP.



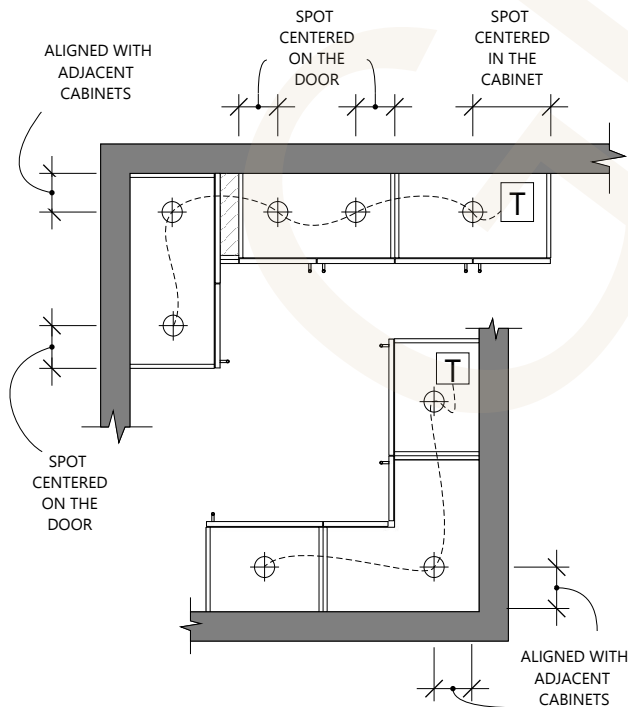
INSTALLATION FOR UPPER CABINET



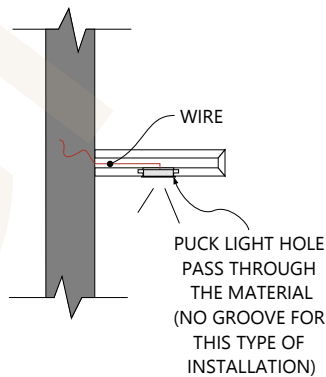
INSTALLATION FOR PANEL UNDER UPPER CABINET



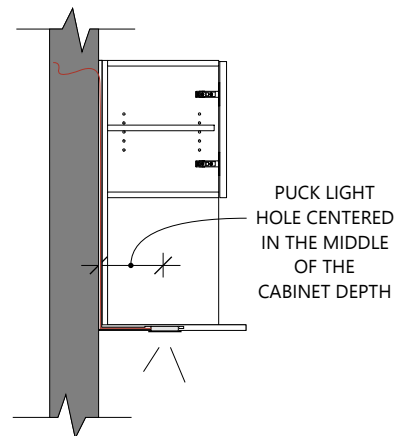
INSTALLATION FOR UPPER, BLIND & CORNER CABINETS



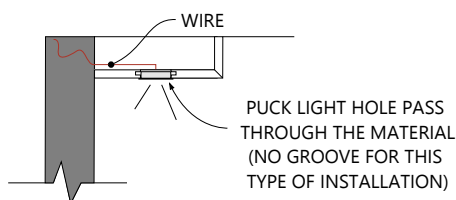
INSTALLATION FOR FLOATING SHELF



INSTALLATION FOR U1DD1MW



INSTALLATION FOR CANOPY BOX



LIGHTING

37

PUCK LIGHT

DIMMABLE LED PUCK LIGHT 2.5W, 12V

REFER TO [PUCK LIGHT INFORMATION](#) & [PUCK LIGHT 306C INSTALLATION INSTRUCTION SHEET](#) FOR MORE DETAILS.

SUB-OPTION

PUCK LIGHT LIGHTING & FRAME COLOR:

- 1 - WARM 306C-SN : 3000 KELVIN - SATIN NICKEL FINISH (250 LUMENS) [#AJ-PKD306C-30KFR-SN](#)
- 2 - COLD 306C-SN : 4000 KELVIN - SATIN NICKEL FINISH (250 LUMENS) [#AJ-PKD306C-40KFR-SN](#)
- 3 - WARM 306C-BK : 3000 KELVIN - BLACK FINISH (250 LUMENS) [#AJ-PKD306C-30KFR-BK](#)
- 4 - COLD 306C-BK : 4000 KELVIN - BLACK FINISH (250 LUMENS) [#AJ-PKD306C-40KFR-BK](#)
- 5 - WARM 306C-WH : 3000 KELVIN - WHITE FINISH (250 LUMENS) [#AJ-PKD306C-30KFR-WH](#)
- 6 - COLD 306C-WH : 4000 KELVIN - WHITE FINISH (250 LUMENS) [#AJ-PKD306C-40KFR-WH](#)

POWER SUPPLY:

- 7 - POWER SUPPLY 20W DIMMABLE OUTPUT 12V (8 PUCK LIGHTS MAX.) [⚠️ REQUIRED #EPS-20D-12V-PC](#)

ACCESSORY DIMENSIONS & DETAILS

PUCK LIGHT:

WIDTH: 2-9/16"

RECESSED DEPTH: 1/2"

CUT-OUT: 2-3/8"Ø

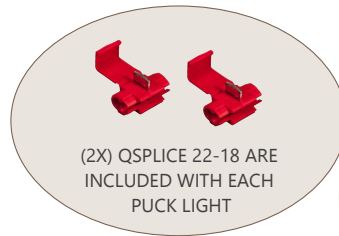
COMES WITH AN 80 INCH WIRE
10 YEAR WARRANTY

POWER SUPPLY:

WIDTH: 9-1/4"

HEIGHT: 1-7/16"

DEPTH: 1-5/8"



⚠️ THE POWER SUPPLY HAVE TO BE ACCESSIBLE. IT CANNOT BE INSTALLED BEHIND A PANEL OR A WALL

⚠️ PUCK LIGHT CAN ONLY BE INSTALLED UNDER CABINET FLOOR.

CABINET'S LIMITATIONS & DETAILS

UPPER CABINET *

PUCK QUANTITY: 1 OR 2 (2 ONLY AVAILABLE WITH DD CABINETS) *

THE PUCKS ARE ALWAYS CENTERED WITH THE MIDDLE OF THE DOOR.

MIN. CABINET DEPTH: 6"

MAX. CABINET DEPTH:

- MATERIAL THICKNESS 5/8" = 15-1/2"
- MATERIAL THICKNESS 3/4" = 22"

FOR UCX (UPPER BLIND CORNER) CABINET *

- IF PUCK QUANTITY = 1, IT WILL BE CENTERED WITH THE MIDDLE OF THE DOOR.
- IF PUCK QUANTITIES = 2, FOR THE SECOND PUCK (BEHIND THE BLIND PANEL), YOU NEED TO SPECIFY THE ADJACENT CABINET DEPTH. SO THE PUCK BEHIND THE BLIND CORNER WILL BE ALIGNED WITH THE ADJACENT CABINET PUCK LIGHT.

FOR UC (UPPER CORNER) CABINET *

- IF PUCK QUANTITY = 1, YOU NEED TO SPECIFY THE ADJACENT CABINET DEPTH AT THE LEFT AND THE CABINET DEPTH AT THE RIGHT. THE PUCK LIGHT WILL BE ALIGNED IN THE CORNER WITH ADJACENT CABINETS.
- IF PUCKS QUANTITIES = 2, THE PUCKS WILL BE CENTERED WITH THE MIDDLE OF THE DOORS.

FLOATING SHELF, CANOPY BOX & PANEL *

PUCK QUANTITY : 1 PER LINEAR FOOT

WIDTH POSITION: EQUAL DISTANCE

DEPTH POSITION: CENTER

MIN. FS, CBX-MJ OR PAN DEPTH: 6"

PUCK LIGHT EXTRA

EXTRA DIMMABLE LED PUCK LIGHT 2.5W, 12V & INSTALLATION ACCESSORIES (TO BE INSTALLED ON SITE)

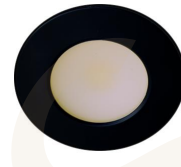
- PUCK-W SN : 3000 KELVIN - SATIN NICKEL FINISH (250 LUMENS) [#AJ-PKD306C-30KFR-SN](#)
- PUCK-C SN : 4000 KELVIN - SATIN NICKEL FINISH (250 LUMENS) [#AJ-PKD306C-40KFR-SN](#)
- PUCK-W BK : 3000 KELVIN - BLACK FINISH (250 LUMENS) [#AJ-PKD306C-30KFR-BK](#)
- PUCK-C BK : 4000 KELVIN - BLACK FINISH (250 LUMENS) [#AJ-PKD306C-40KFR-BK](#)
- PUCK-W WH : 3000 KELVIN - WHITE FINISH (250 LUMENS) [#AJ-PKD306C-30KFR-WH](#)
- PUCK-C WH : 4000 KELVIN - WHITE FINISH (250 LUMENS) [#AJ-PKD306C-40KFR-WH](#)
- QSPLICE 22-18 : QUICK CONNECTOR 22/18 [#QUICK-SPLICE-22_18](#)
- LV-WIRE 18_2-LF : LOW VOLTAGE WIRE 18AWG - ORDER PER LINEAR FOOT [#FIL-2468-2C-18GA-RB](#)
- LV-WIRE 18_2-RLL : LOW VOLTAGE WIRE 18AWG ROLL OF 100 LINEAR FEET [#FIL-2468-2C-18GA-RB](#)
- POWER60W: POWER SUPPLY 60W DIMMABLE (18 PUCK LIGHTS MAX.) [#EPS-60D-12V-PC](#)
- KIT_PUCKHWR : INSTALLATION KIT FOR PUCK LIGHT - 10' LINEAR OF LOW VOLTAGE WIRE & 4 QSPLICE 22-18



WARM 306C-SN
PUCK-W SN
(SATIN NICKEL)



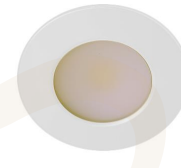
COLD 306C-SN
PUCK-C SN
(SATIN NICKEL)



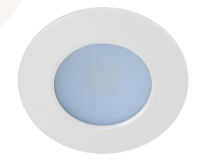
WARM 306C-BK
PUCK-W BK
(BLACK)



COLD 306C-BK
PUCK-C BK
(BLACK)



WARM 306C-WH
PUCK-W WH
(WHITE)



COLD 306C-WH
PUCK-C WH
(WHITE)



POWER SUPPLY 20W DIMMABLE
TCPOWER20W



LV-WIRE 18_2-RLL



QSPLICE 22-18



LV-WIRE 18_2-LF



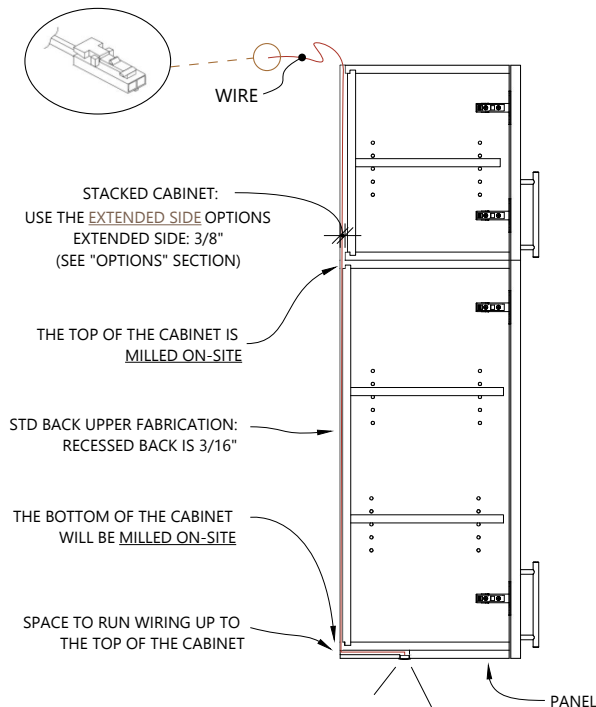
KIT_PUCKHWR

TEMPORARILY OUT OF STOCK

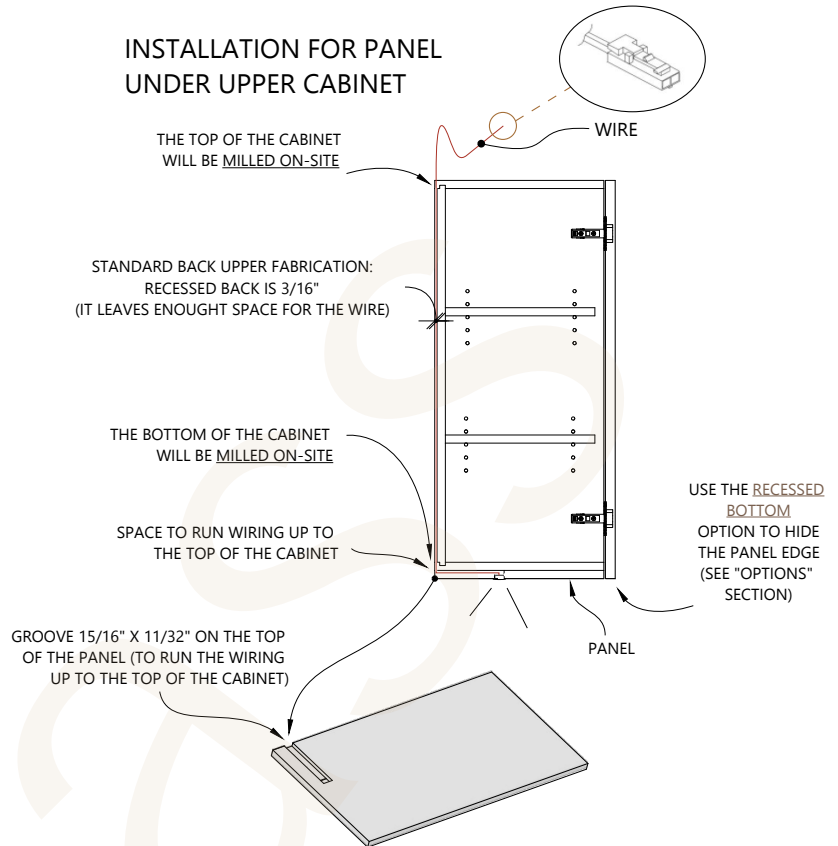
NEW

74 LED STRIP BOTTOM INFORMATION

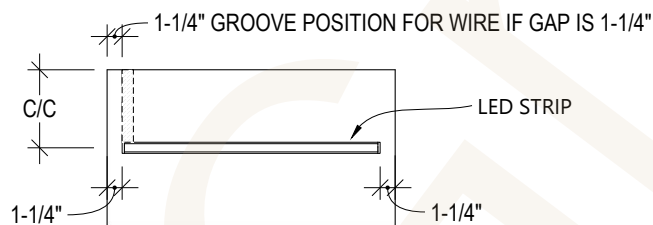
INSTALLATION UNDER AN UPPER CABINET (WITH STACKED CABINETS)



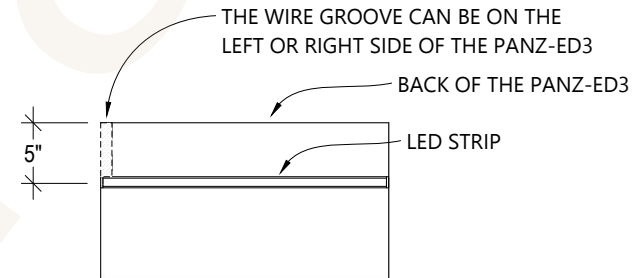
INSTALLATION FOR PANEL UNDER UPPER CABINET



PANZ-ED3: GAP OPTIONS & DEPTH POSITION

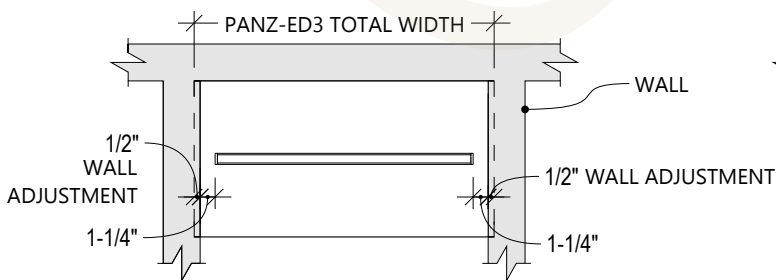


1-1/4" GAPS (STD) ON EACH SIDE & LED STRIP DEPTH CENTERED (STD) IN THE PANZ-ED3

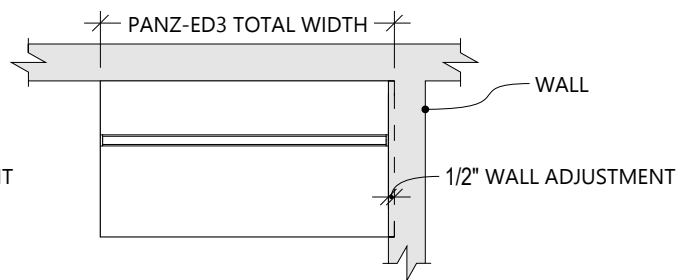


NO GAP ON EACH SIDE & LED STRIP DEPTH OFF-CENTER IN THE PANZ-ED3

PANZ-ED3: WALL ADJUSTMENTS



WALL ADJUSTMENT ON EACH SIDE & 1-1/4" GAPS ON EACH SIDE



WALL ADJUSTMENT ON ONE SIDE & NO GAP ON EACH SIDE

74

LED STRIP BOTTOM

DIMMABLE LED STRIP, CONTINUOUS LIGHTING DOTLESS, 24V, 528LED / METER, IP24

FOR MORE DETAILS, REFER TO [LED STRIP BOTTOM INFORMATION](#) [LED STRIP INSTALLATION INSTRUCTION SHEET](#).

NEW

THE "74 LED STRIP BOTTOM" ACCESSORY IS ONLY AVAILABLE WITH THE PANZ-ED3.

SUB-OPTION (HARDWARE)

LED STRIP LIGHTING & FRAME COLOR:

- 1 - WARM 100S-AL : 3000 KELVIN - PROFILE 100S & WHITE DIFFUSER - ALUMINIUM FINISH (900 LUMENS/METER)
- 2 - COLD 100S-AL : 4000 KELVIN - PROFILE 100S & WHITE DIFFUSER - ALUMINIUM FINISH (1000 LUMENS/METER)
- 3 - WARM 100S-BK : 3000 KELVIN - PROFILE 100S & WHITE DIFFUSER - BLACK FINISH (900 LUMENS/METER)
- 4 - COLD 100S-BK : 4000 KELVIN - PROFILE 100S & WHITE DIFFUSER - BLACK FINISH (1000 LUMENS/METER)
- 5 - WARM 100S-WH : 3000 KELVIN - PROFILE 100S & WHITE DIFFUSER - WHITE FINISH (900 LUMENS/METER)
- 6 - COLD 100S-WH : 4000 KELVIN - PROFILE 100S & WHITE DIFFUSER - WHITE FINISH (1000 LUMENS/METER)

POWER SUPPLY  (REQUIRED):

- 7 - POWER SUPPLY 30W DIMMABLE OUTPUT 24V WITH 10 OUTPUTS DISTRIBUTOR (WIRE: 55")
MAX. LENGTH PER LINEAR INCH LED STRIP: 106" [#SLPI-24V-30WDIMNB-SL10MO](#)
- 8 - POWER SUPPLY 60W DIMMABLE OUTPUT 24V WITH 10 OUTPUTS DISTRIBUTOR (WIRE: 55")
MAX. LENGTH PER LINEAR INCH LED STRIP: 212" [#SLPI-24V-60WDIMNB-SL10MO](#)
- 9 - POWER SUPPLY 96W DIMMABLE OUTPUT 24V WITH 10 OUTPUTS DISTRIBUTOR (WIRE: 55")
MAX. LENGTH PER LINEAR INCH LED STRIP: 339" [#SLPI-24V-96WDIMNB-SL10MO](#)

EXTENSION:

- 10 - 78" EXTENSION CORD [#SLMOEXTENSION-2](#)

MACHINING ONLY, FOR SERVICE CALL:

- 11 - LED STRIP 100S MACHINING ONLY (NO HARDWARE INCLUDED) *

* THE DIMENSIONS OF THE LED STRIP GROOVE CANNOT BE MODIFIED.
REFER TO THE [ACCESSORY DIMENSIONS & DETAILS](#) BELOW.

SUB-OPTION (POSITIONS & ADJUSTMENTS PARAMETERS)

- 11 - GAPS (LEFT & RIGHT) OF THE LED STRIP:
 - 1-1/4" (STD)
 - NONE
- 12 - WALL ADJUSTMENT:
 - NONE (STD)
 - 1/2" LEFT
 - 1/2" RIGHT
 - 1/2" LEFT & RIGHT
- 13 - DEPTH POSITION OF LED STRIP (FROM THE BACK OF THE PANZ-ED3 TO THE MIDDLE OF THE LED STRIP):
 - IF THE VALUE IS "0" (STD), THE LED STRIP WILL BE CENTER IN THE MIDDLE OF THE PANZ-ED3
 - MINIMUM 2" REQUIRED AT THE BACK OF THE PANZ-ED3
- 14 - WIRE GROOVE POSITION AT THE TOP OF THE PANZ-ED3:
 - AT THE RIGHT
 - AT THE LEFT (STD)

ACCESSORY DIMENSIONS & DETAILS

MACHINING FOR LED STRIP:

WIDTH: 3/4"

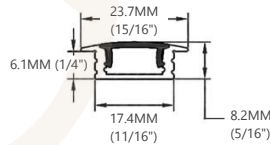
DEPTH: 9/32"

LED STRIP PROFILE LENGTH: 117"

LED STRIP: 8MM, 24V, 528 DEL/MÈTRE, IP22

THE LED STRIP COMES WITH A 78" WIRE

3 YEAR WARRANTY



POWER SUPPLY 30W:

WIDTH: 6-1/8"

HEIGHT: 1"

DEPTH: 2-1/8"

POWER SUPPLY 60W:

WIDTH: 6-15/16"

HEIGHT: 1"

DEPTH: 2-3/8"


POWER SUPPLY 96W:

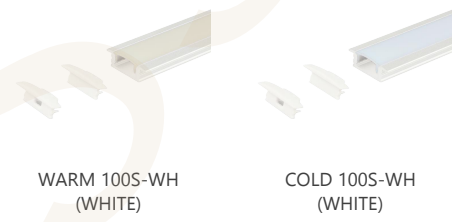
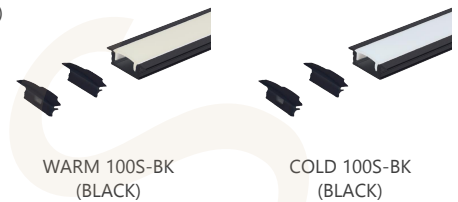
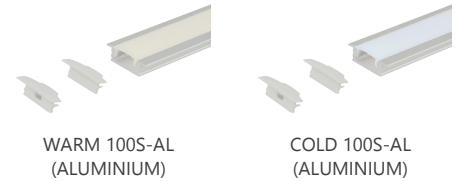
WIDTH: 8-7/8"

HEIGHT: 1-5/8"

DEPTH: 2-3/4"

 THE POWER SUPPLY HAVE TO BE ACCESSIBLE. IT CANNOT BE INSTALLED BEHIND A PANEL OR A WALL

 THERE IS A DIFFERENCE IN KELVIN GRADATION BETWEEN THE PUCK LIGHTS (ACC. 37) AND THE LED STRIPS. THESE ARE 2 DIFFERENT MANUFACTURERS, AND THE KELVIN GRADATION ADHERES TO EACH MANUFACTURER'S SPECIFIC STANDARDS.



POWER SUPPLY 30W DIMMABLE
SLPOWER30W-10MO



POWER SUPPLY 60W DIMMABLE
SLPOWER60W-10MO



POWER SUPPLY 96W DIMMABLE
SLPOWER96W-10MO



EXTENSION CORD 78"
SLEXT-78

WIRELESS CHARGER

A WIRELESS DEVICE TO CHARGE YOUR SMART PHONE

ACCESSORY DIMENSIONS & LIMITATIONS

DIAMETER: 3-7/16"

HEIGHT: 7/8"

RECESS HEIGHT: 27/32"

BORE HOLE: 3-1/8"

MATERIAL: TEMPERED GLASS SURFACE 9H GRADE /
STAINLESS STEEL / PLASTIC

TO BE INSTALLED ON SITE *

INCLUDE A WALL CHARGER & A USB/USB-C CABLE 78"

2 COLORS AVAILABLE:

- WLC-BK : BLACK BACKGROUND & BLACK ANODISE S/S RING(#NWT1.2-BLK-RB)

- WLC-WH : WHITE BACKGROUND & BLACK ANODISE S/S RING(#NWT1.2-WHT-RB)

* REFER TO THE WIRELESS CHARGER INSTALLATION INSTRUCTION SHEET.

** REFER TO DRILLING TOOLS FOR THE WIRELESS CHARGER

- ⚠ ALWAYS USE THE WALL CHARGER THAT IS INCLUDED TO GUARANTEE A PROPER OPERATION OF THE UNIT.
- ⚠ THE WIRELESS CHARGER MUST NEVER BE INSTALLED NEAR A MICROWAVE.
- ⚠ THE WIRELESS CHARGER NEEDS VENTILATION. ALLOW AIR TO CIRCULATE UNDER THE CHARGER TO PREVENT OVERHEAT*. THE CUT-OUT MUST PASS THROUGH THE MATERIAL.

ACCESSORY DETAILS

TO BE INSTALLED ON A COUNTERTOP, ON A TOP CABINET OR IN A OPENING CABINET*.

YOU NEED TO PLAN AN OUTLET, THE DEVICE IS ELECTRONIC.

INPUT: 12V/1.75A, 9V/1.75A, 5V/1.65A

OUTPUT: 15W / 10W / 7.5W / 5W

FREQUENCY: 110-148 KHZ

ALIMENTATION: 20AWG POWER CORD MICRO USB /

WALL CHARGER QC3.0 CERTIFIED UL - SHORT CIRCUIT PROTECTION

CERTIFICATION: WPC QI VERSION 1.2.4 - FCC - CE - REACH - ROHS

OPERATING TEMPERATURE: 0° TO 40°

FAST CHARGE EPP 15W

LOW ELECTRICITY CONSUMPTION: STANDBY MODE WHEN THERE IS NO PHONE

COMPATIBLE WITH IPHONE (MAGSAFE COMPATIBLE) & ANDROID



ROUND CABLE GROMMET

ORGANIZE THE WIRES ON YOUR DESK

ACCESSORY DIMENSIONS & DETAILS

DIAMETER: 2-27/32"

HEIGHT: 1"

RECESS HEIGHT: 7/8"

BORE HOLE: 2-3/8"

TO BE INSTALLED ON SITE

COLORS: 1 - GRM-BK: BLACK (#60091090)

2 - GRM-WH: WHITE (#60091030)

3 - GRM-CH: CHROME (#600910140)

4 - GRM-GG: GRAPHITE GRAY (#600910907)

